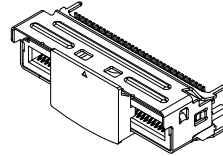
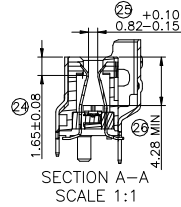
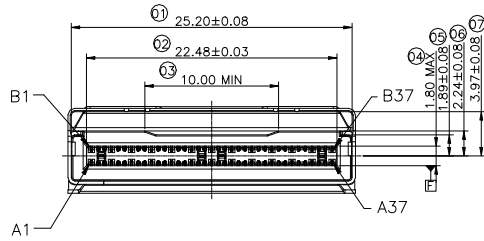


THIS DRAWING AND THE DATA DISCLOSED HEREIN OR HEREWITH IS NOT TO BE REPRODUCED USED OR DISCLOSED IN WHOLE OR IN PART TO ANYONE WITHOUT THE PERMISSION OF JPC connectivity Inc.(JPC)

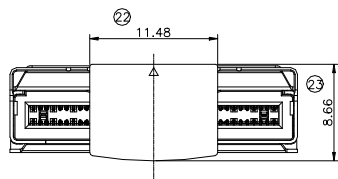
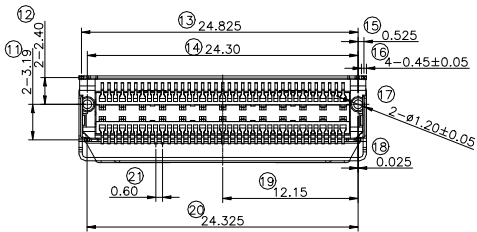
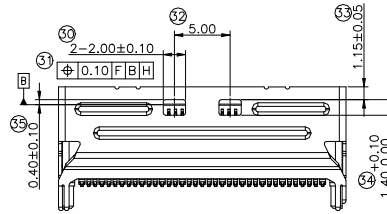
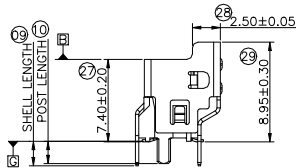
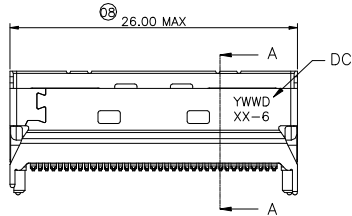
CUSTOMER DRAWING  
DRWC-013702

REV.	ECN NO.	DESCRIPTION	MDF'D	APP'D	DATE
A4		APPROVAL DRAWING: ADD CONNECTOR IMPEDANCE REFERENCE	Sam	Ray	10/13/2025
A5		APPROVAL DRAWING: MODIFY PART NUMBER CODING RULE	Sam	Ray	11/17/2025
A6		APPROVAL DRAWING: MODIFY PART NUMBER CODING RULE	Kuroo	Ray	12/31/2025



NOTES:

- MATERIALS:  
HOUSING: HIGH TEMPERATURE THERMOPLASTIC, UL 94-V0, COLOR: BLACK  
TERMINAL: COPPER ALLOY  
SHELL: STAINLESS STEEL
- FINISH  
TERMINAL:  
CONTACT AREA: GOLD PLATING  
SOLDER AREA: GOLD FLASH  
UNDER PLATING: NICKEL PLATED 50U" MIN. OVER ALL  
SHELL:  
NICKEL PLATED 50U" MIN. OVERALL
- DATE CODE LOCATION SHOWN, DATE CODE FORMAT: YWWD  
Y: LAST ONE DIGIT OF THE YEAR  
WW: ONE CERTAIN WEEK OF THE YEAR  
D: ONE DAY OF THE WEEK  
DISTINGUISH BETWEEN THE CODES FOR HIGH SPEED AND THOSE WITH SIDE BAND:XX-6  
SB:WITH SIDE BAND  
HS:FULL HIGH SPEED  
6: GEN 6
- INSERTION LOSS: -0.25dB@16GHz
- TERMINAL DEFINED AS GND IN SFF-TA-1016 IS COMMON TOGETHER.
- CONNECTOR IMPEDANCE REFERENCE: 85Ω
- REFER TO SPECIFICATION SFF-TA-1016 FOR THE PINOUT OF THE CONNECTOR.



P948 X XXX 4 X X 2 - 0

CONNECTOR PIN TYPE:  
B: GEN6; FULL HS  
C: GEN6; WITH SB

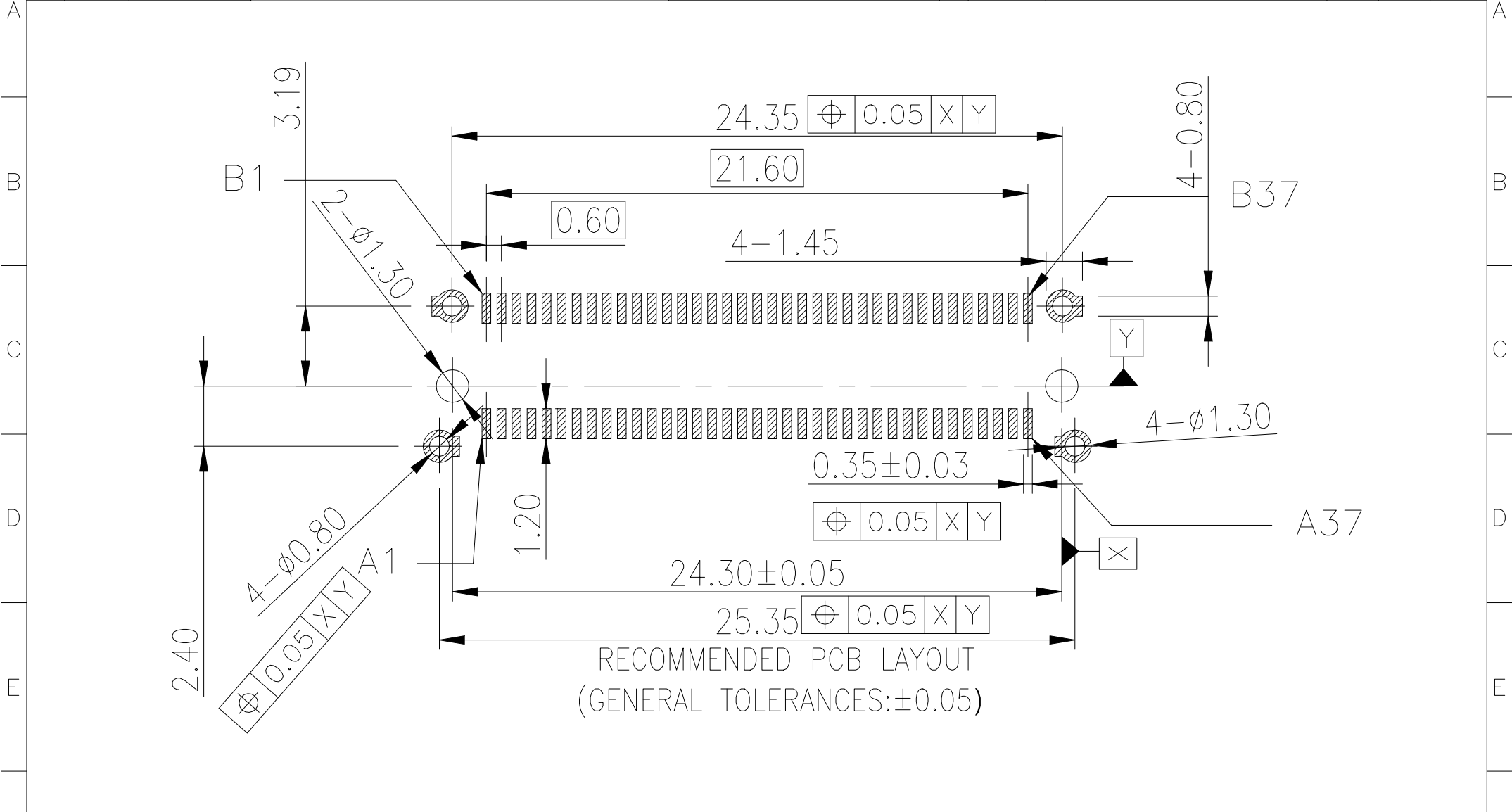
PIN COUNT:  
074:74 PIN  
124:124 PIN

CONNECTOR STYLE:  
4:VERTICAL TYPE

PACKAGE CODE:  
2:TAPE & REEL  
SHELL PIN LENGTH; POST PIN LENGTH  
1:DIM.S=1.20mm; DIM.P=1.20mm  
2:DIM.S=2.20mm; DIM.P=2.00mm  
3:DIM.S=3.00mm; DIM.P=2.00mm  
CONTACT FINISH:  
6:Au 30μ"; SOLDER TAIL: GOLD PLATED

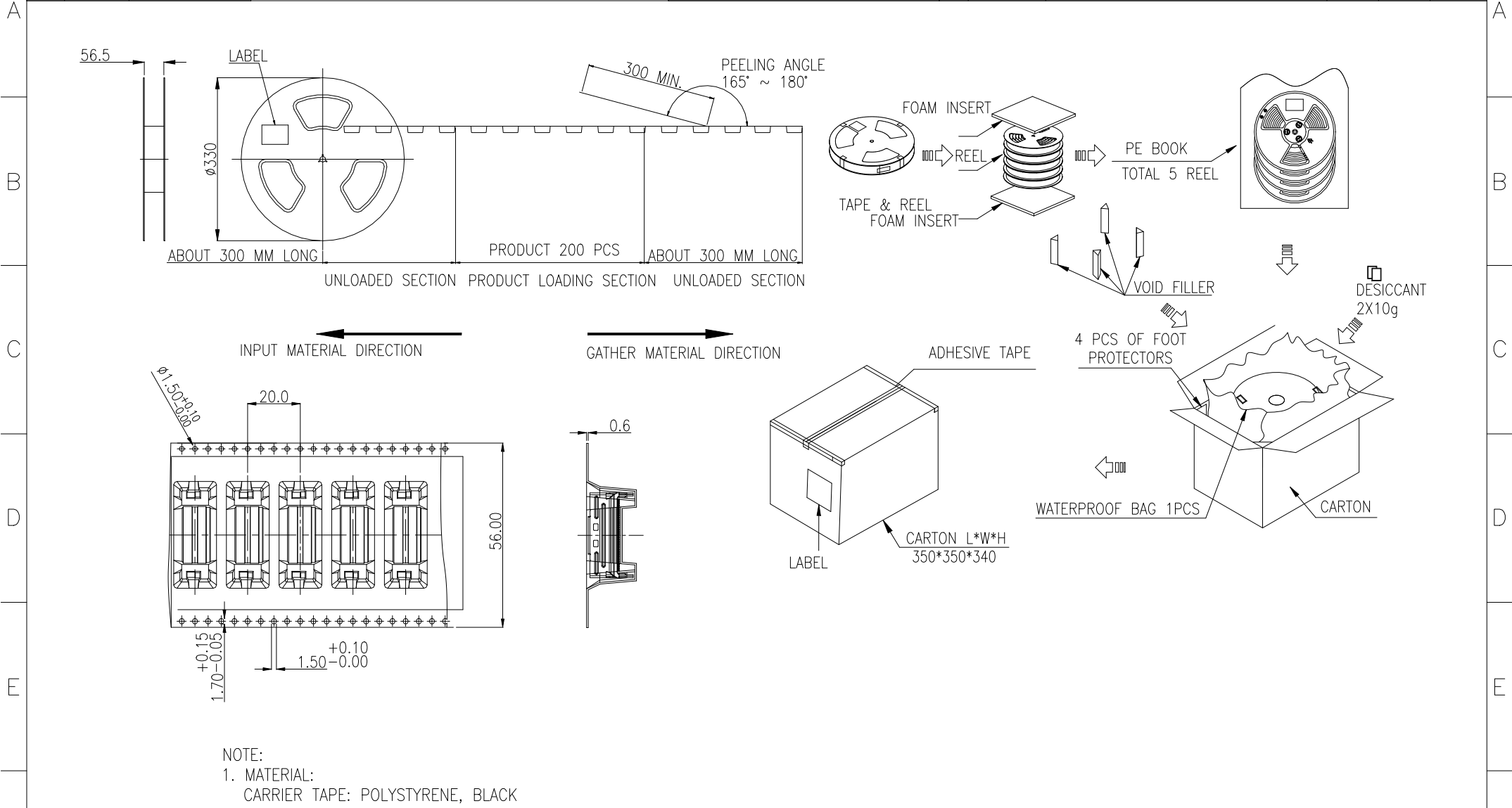
RoHS COMPLIANT HALOGEN FREE	Unit:mm(inch)	PROJECTION 	<b>JPC connectivity</b> TITLE: MCIO Gen6 Pin Vertical Connector		PD./FILE NO. XXXXXXXXXX	
	GENERAL TOLERANCES: (UNLESS SPECIFIED)	D.R. 02/18/2025 Sam			CH.K 02/18/2025 Jason_Liu	X-XXXX
	0 =±1 (0.039) 0.0 =±5 (0.02) 0.00 =±3 (0.012) 0.000=±.15(0.006) 0° =± 2° 0.0° =± 1°	APV.D 02/18/2025 Ray	SCALE: NA	SIZE: A4	PART NO. P948X07446X2-0	REV. A6
					SHEET 1 OF 3	

1	2	3	4	5	6	7	8				
THIS DRAWING AND THE DATA DISCLOSED HEREIN OR HEREWITH IS NOT TO BE REPRODUCED USED OR DISCLOSED IN WHOLE OR IN PART TO ANYONE WITHOUT THE PERMISSION OF JPC connectivity Inc.(JPC)				CUSTOMER DRAWING DRWC-013702		REV.	ECN NO.	DESCRIPTION	MDF'D	APP'D	DATE
						A4		APPROVAL DRAWING: ADD CONNECTOR IMPEDANCE REFERENCE	Sam	Ray	10/13/2025
						A5		APPROVAL DRAWING: MODIFY PART NUMBER CODING RULE	Sam	Ray	11/17/2025
						A6		APPROVAL DRAWING: MODIFY PART NUMBER CODING RULE	Kuroo	Ray	12/31/2025



<b>RoHS COMPLIANT</b>	<b>HALOGEN FREE</b>	Unit:mm(inch)	PROJECTION	<b>JPC connectivity</b>	
		GENERAL TOLERANCES: (UNLESS SPECIFIED)	D.R. 02/18/2025	TITLE	PD./FILE NO.
		0 =±1 (0.039)	Sam	MCI0 Gen6 Pin Vertical Connector	XXXXXXXXXX
		0.0 =±.5 (0.02)	CH.K 02/18/2025	SCALE	SIZE
0.00 =±.3 (0.012)	Jason_Liu	NA	A4	PART NO.	REV. A6
0.000=±.15(0.006)	APV.D 02/18/2025	Ray		P948X07446X2-0	SHEET 2 OF 3
0° =± 2'					
0.0° =± 1'					

1	2	3	4	5	6	7	8				
THIS DRAWING AND THE DATA DISCLOSED HEREIN OR HEREWITH IS NOT TO BE REPRODUCED USED OR DISCLOSED IN WHOLE OR IN PART TO ANYONE WITHOUT THE PERMISSION OF JPC connectivity Inc.(JPC)				CUSTOMER DRAWING DRWC-013702		REV.	ECN NO.	DESCRIPTION	MDF'D	APP'D	DATE
						A4		APPROVAL DRAWING: ADD CONNECTOR IMPEDANCE REFERENCE	Sam	Ray	10/13/2025
						A5		APPROVAL DRAWING: MODIFY PART NUMBER CODING RULE	Sam	Ray	11/17/2025
						A6		APPROVAL DRAWING: MODIFY PART NUMBER CODING RULE	Kuroo	Ray	12/31/2025



- NOTE:
- MATERIAL:  
CARRIER TAPE: POLYSTYRENE, BLACK  
COVER TAPE: TRANSPARENT POLYSTYRENE  
REEL: POLYSTYRENE, BLACK
  - COVER TAPE PEELING STRENGTH: 20gf~130gf. AT 300mm/Min
  - 200 PCS/REEL; 5 REEL/CARTON; 1000 PCS/CARTON

<b>RoHS COMPLIANT</b>	<b>HALOGEN FREE</b>	Unit:mm(inch)	PROJECTION	<b>JPC connectivity</b>	
		GENERAL TOLERANCES: (UNLESS SPECIFIED)	D.R. 02/18/2025		
		0 =±1 (0.039)	Sam	TITLE	PD./FILE NO.
		0.0 =±5 (0.02)	CH.K 02/18/2025	MCIO Gen6 Pin Vertical Connector	XXXXXXXXXX
0.00 =±.3 (0.012)	Jason_Liu	SCALE	SIZE	PART NO.	REV. A6
0.000=±.15(0.006)	APV.D 02/18/2025	NA	A4	P948X07446X2-0	SHEET 3 OF 3
0° =± 2'	Ray				
0.0° =± 1'					